

# 2016 Panhellenic Recruitment Guide



ADD

*another chapter*

TO YOUR

STORY

# Table of Contents

3	About the National Panhellenic Conference (NPC)
4 - 7	All About Recruitment
4	- Registration
5	- Experience
7	- Meet Your Recruitment Counselors
9	- Potential Member Rights & Recruitment Rules
11 - 14	Meet the Chapters
12	- <i>Delta Zeta</i>
13	- <i>Phi Mu</i>
14	- <i>Zeta Tau Alpha</i>
15	Greek Speak
17	Hazing Policy



## *NPC Mission Statement*

The National Panhellenic Conference exists to promote the values of and to serve as an advocate for its member groups in collaboration with those members, campuses and communities.

National Panhellenic Conference, founded in 1902, is an umbrella organization for 26 inter/national women's fraternities and sororities. Each member group is autonomous as a social, Greek-letter society of college women and alumnae. Members are represented on more than 620 college and university campuses in the United States and Canada, in over 4,600 alumnae associations, making up over 4 million sorority women in the world.

*-Adopted at the Biennial Session, 2005*

# About the National Panhellenic Conference (NPC)

## **Panhellenic Council of USC Upstate**

USC Upstate is home to three NPC member organizations; Delta Zeta ( $\Delta Z$ ), Phi Mu ( $\Phi M$ ) and Zeta Tau Alpha (ZTA). These chapters are governed by the Panhellenic Council, which is advised by the Office of Student Life. For additional information contact John Montemayor, assistant director of Student Life at 864-503-7488.

## **The Panhellenic Creed**

We, as Undergraduate members of women's fraternities, stand for good scholarship, for guarding of good health, for maintenance of fine standards, and for serving to the best of our ability, our college community. Cooperation for furthering fraternity life, in harmony with its best possibilities, is the idea that shall guide our fraternity activities.

We, as Fraternity Women, stand for service through the development of character inspired by the close contact and deep friendship of individual fraternity and Panhellenic life. The opportunity for wide and wise human service, through mutual respect and helpfulness, is the tenet by which we strive to live.

# About Panhellenic Recruitment

Panhellenic Recruitment will begin **Friday, August 26** and will conclude with **Bid Day on Monday, August 29**.

Recruitment is the main process that NPC affiliated sororities at USC Upstate use to recruit new members. This process is different from the process for seeking membership in a National Pan-Hellenic Council (NPHC) sorority (Delta Sigma Theta, Sigma Gamma Rho, and Zeta Phi Beta). If you are interested in joining an NPHC sorority, individual chapters select their membership event dates, which occur throughout the year. For additional information regarding NPHC organizations, please contact the Office of Student Life at 503-5122.

Panhellenic Recruitment is open to any currently enrolled USC Upstate student regardless of race, age, color, religion, national origin, disability, veteran status or sexual orientation. Students must have a 2.5 cumulative GPA to participate in Recruitment (first year students will use HS GPA for consideration and transfer students will use their incoming collegiate GPA).

## Registration

Potential New Members (PNMs) are able to register online for Panhellenic Recruitment **on-line beginning June 6, 2015**.

Registration fees are as follows:

**Early Registration: June 6 - July 25 — \$30 • Regular Registration: July 26 - August 19 — \$40**

Registration covers meals, administrative costs, Recruitment T-shirt, and a \$1 donation to the Panhellenic Council's philanthropy, Circle of Sisterhood. Visit [www.circleofsisterhood.org](http://www.circleofsisterhood.org) for additional information.

You can register online by visiting [www.uscupstate/gogreek](http://www.uscupstate/gogreek) and following the links to Panhellenic Recruitment. Registration fees are non-refundable and can be paid online via GreekBill when you register, via check\* or cash during Orientation, in person by visiting the Office of Student Life or by mail:

Office of Student Life  
Campus Life Center, Suite 210  
800 University Way  
Spartanburg, SC 29303

*\*Checks should be made out to USC Upstate, and include "Panhellenic Recruitment" on the Memo Line.*

## Potential New Member (PNM) Orientation

Monday, August 22 • Tukey Theater, 6 p.m.

This event provides PNMs the opportunity to learn more about Panhellenic life and the Recruitment experience before formal Recruitment begins. This orientation will provide an overview of the Recruitment process, how to prepare for Recruitment, how to make decisions about affiliation, the costs associated with sorority membership, and much, much more!

You must be registered for Recruitment to attend this event. For additional information, please contact the Office of Student Life at 864-503-5122.

## *The Recruitment Experience*

Recruitment consists of three rounds of events that allow you the opportunity to learn about each Panhellenic sorority at USC Upstate, as well as allow chapters the chance to get to know you. During Recruitment events, women will have the time to ask questions about sorority activities, financial obligations, new member programs, scholarship, community service and sorority life in general.

### *Description of Rounds:*

#### **Round 1: Information Round**

Friday, August 26 • The George, First Floor, 5 p.m.

During this round, PNMs visit each sorority for 30 minutes. Sororities typically provide an overview of their chapter, and you are able to receive general information about their sisterhood. This is the most casual round of Recruitment, so a skirt, slacks or casual dress are appropriate. At the conclusion of this round, chapters and PNMs will submit their preferences for Round 2 invitations.

#### **Round 2: Philanthropy Round**

Saturday, August 27 • The George, First Floor, 3 p.m.

This round is by invitation only and lasts for 45 minutes. PNMs may visit up to three chapters based on their invitations. During this round, PNM's will learn about each chapter's philanthropy and service initiatives. You may do a craft or activity as part of this round. PNMs are asked to wear their Recruitment T-shirt and casual pants for this event, as you may be sitting on the floor. At the conclusion of this round, Chapters and PNM's will submit their preferences for Round 3 invitations.

### **Round 3: Preference Round**

Sunday, August 28 • The George, First Floor, 3 p.m.

This is the final round of Recruitment and is by invitation only. PNMs may be invited to visit one or two chapters for one hour. This is the most serious and intimate round of Recruitment where you are able to hear personal and heartwarming reflections from current members regarding their experiences within their sisterhood. Invitations to Preference Round parties should be respected, as it indicates that the sorority is very interested in you as a potential member. The attire for this round is the most formal, so semiformal attire or dressy slacks would be appropriate. At the conclusion of this round, PNMs and Chapters will rank their final selections, and matches will be revealed at Bid Day.

### **Bid Day**

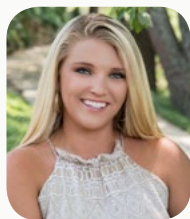
Monday, August 29 • Upper Quad (behind Stockwell Administration Building), 5 p.m.

Bid Day is a day of celebration! At this time, PNMs who received invitations (bids) are able to review their invitation and decide if they wish to accept. If so, when their name is called, they run out to meet their new sisters on the Upper Quad.

**It is important to recognize that Recruitment is a selection process.** The Panhellenic Advisor and Recruitment Counselors will explain the process in detail throughout the week. Each PNM will be assigned to a group led by two Recruitment Counselors who will be available during the entire process to answer questions.

# Meet Your Recruitment Counselors

Recruitment Counselors are your ambassadors to the Recruitment process and Panhellenic life at USC Upstate. These women are active members of their chapters, however, they are required to disaffiliate during Recruitment season in order to provide PNM's with objective information. They are available to answer any questions you have, but are unable to reveal their affiliation until Bid Day, so please be respectful of this.



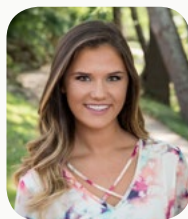
**Alli, Director of Recruitment**

**Major:** Nursing

**Year:** Senior

**Hometown:** Easley, SC

I joined a sorority to find my home away from home. I was looking for a support system, to be involved on campus, and a philanthropy that I could give back to. I found exactly that through Greek Life.



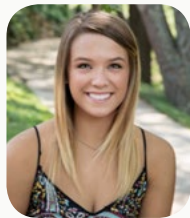
**Lindsey**

**Major:** Nursing

**Year:** Junior

**Hometown:** Greer, SC

I joined a sorority because I wanted to be a part of something on campus. I found that during my freshman year I stayed in a dorm a majority of the time. After thinking for a while, I came to the conclusion that joining a sorority was the best way to get myself involved.



**Madison**

**Major:** Child Development and Family Studies

**Year:** Senior

**Hometown:** Easley, SC

I joined a sorority because I wanted to find my "place" in college. By joining I have definitely found where I belong and have the best of friends that I could ask for!



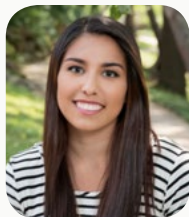
**Courtney**

**Major:** Exercise Science

**Year:** Junior

**Hometown:** Easley, SC

I joined a sorority because I wanted to become a part of something bigger than myself, to find my home away from home. Those three nights of recruitment I never knew I was meeting people that would change my life forever and that I no longer could live my life without.



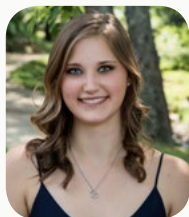
### **Bailey**

**Major:** Business

**Year:** Senior

**Hometown:** Greer, SC

I joined a sorority because I didn't know anyone at Upstate and I wanted to have a group of friends I could always count on. I also wanted to be able to be involved while I was in college. Joining a sorority is something I can look back on and remember the amazing memories.



### **Michelle**

**Major:** Nursing

**Year:** Senior

**Hometown:** Spartanburg, SC

I joined a sorority because I wanted to make the kind of friendships that I never had in high school. I was a really shy person who tried hard to be a part of a group and never succeeded. After joining a sorority, I finally have that group of friends who have brought me out of my comfort zone and still be friends though thick and thin.



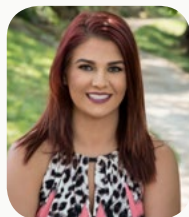
### **Jordan**

**Major:** Elementary Education

**Year:** Junior

**Hometown:** Greenville, SC

I joined a sorority because I wanted to become a part of something bigger than myself. I wanted to make lifelong friendships and memories, which is exactly what I have done. Joining a sorority two years ago was the best decision I've made while being in college.



### **Devin**

**Major:** Psychology

**Year:** Senior

**Hometown:** Ft. Mill, SC

I chose to go Greek to get involved in college, meet forever friends, and become a part of something bigger than myself.



## Potential Member Bill of Rights

- The right to be treated as an individual
- The right to be fully informed about the recruitment process
- The right to ask questions and receive true and objective answers from Recruitment Counselors and members
- The right to be treated with respect
- The right to be treated as a capable and mature person without being patronized
- The right to have and express opinions with confidentiality to the Recruitment Counselors
- The right to make informed choices without undue pressures from others
- The right to be fully informed about the binding agreements implicit in the acceptance card signing
- The right to make one's own choice and decision and accept full responsibility for the results of that decision
- The right to have a positive, safe and enriching recruitment and new member experience

## Recruitment Rules

The Panhellenic Council created the following Recruitment Rules to establish equal consideration to all Potential New Members (PNMs) and sorority women. These rules are in place to help you and the sorority members maintain ethical standards during the Recruitment period.

PNM's are expected to comply with the rules, and failure to do so may result on dismissal from Panhellenic Recruitment. If you have any questions or know of any violation of these rules please contact your Recruitment Counselor or the Office of Student Life.

## Recruitment Rules

1. All PNMs must have completed the official Recruitment registration form and have paid their Recruitment registration fee to participate in Recruitment.
2. Sorority members and PNMs shall uphold all National Panhellenic Conference UNANIMOUS AGREEMENTS.
3. Use of alcoholic beverages in Recruitment is prohibited.
4. Men are prohibited from participating in Recruitment functions.
5. Members cannot buy or accept anything from a PNM.
6. A sorority member cannot at any time promise a bid, directly or indirectly, to a PNM.
7. No sorority member may visit a PNM in her residence hall room, apartment or place of residence except in public areas such as study rooms, lobbies, or hallways, nor may PNMs visit any residence hall room, apartment or place of residence in which any sorority member resides.\*
8. PNMs are not allowed to call, e-mail, or write letters to any sorority member except for academic reasons. PNMs are also prohibited from contacting members via Facebook, Instagram, Twitter, MySpace, or other social networking media.\*
9. Sorority members and PNMs are not to meet off campus at pre-determined locations and times.
10. PNMs should also refrain from gossiping or speaking negatively about Recruitment parties or participating chapters. Failure to comply could result in your removal from Recruitment.

*\*In the event that a PNM and sorority member are related (sisters, cousins, etc.) or share a residence are they permitted to communicate outside of Recruitment. All of those relationships must be disclosed to the Recruitment Chair or Student Life staff prior to Recruitment for clearance. At no point should PNMs and members discuss chapters or Recruitment, regardless of their relationship.*

# Meet the Chapters

*Phi Mu Fraternity*  
(ΦM)

*Delta Zeta Sorority*  
(ΔZ)

*Zeta Tau Alpha Fraternity*  
(ZTA)



# Delta Zeta Sorority (ΔΖ)

Nickname: DZ

Founded: 1902, Miami University (Ohio)

Chapter: Omicron Mu, chartered 1992

Colors: Rose & Vieux Green

Mascot/Symbol: Turtle

Flower: Killarney Rose

Philanthropies: Speech and Hearing, The Painted Turtle Camp

Link to National Website: [www.deltazeta.org](http://www.deltazeta.org)



# Phi Mu Fraternity (ΦΜ)



Nickname: n/a

Founded: 1852, Wesleyan College (GA)

Chapter: Lambda Zeta, chartered 1993

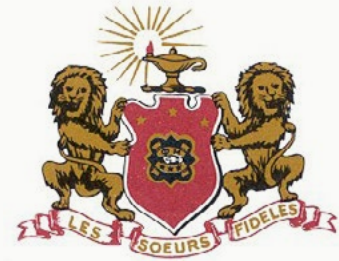
Colors: Rose & White

Mascot/Symbol: The Lion (Sir Fidel)

Flower: Rose Carnation

Philanthropies: Children's Miracle Network

Link to National Website: [www.phimu.org](http://www.phimu.org)



# Zeta Tau Alpha Fraternity (ZTA)



Nickname: Zeta

Founded: 1898, Longwood University (VA)

Chapter: Kappa Rho, Chartered 2002

Colors: Turquoise Blue & Steel Gray

Mascot/Symbol: Five-pointed Crown

Flower: White Violet

Philanthropies: Breast Cancer Awareness and Education

Link to National Website: [www.zetataualpha.org](http://www.zetataualpha.org)



# Greek Speak: Greek Alphabet

**A**

**Alpha**  
(al-fah)

**B**

**Beta**  
(bay-tah)

**Γ**

**Gamma**  
(gam-ah)

**Δ**

**Delta**  
(del-tah)

**E**

**Epsilon**  
(ep-si-lon)

**Z**

**Zeta**  
(zay-tah)

**H**

**Eta**  
(ay-tah)

**Θ**

**Theta**  
(thay-tah)

**I**

**Iota**  
(eye-o-tah)

**K**

**Kappa**  
(cap-pah)

**Λ**

**Lambda**  
(lamb-dah)

**M**

**Mu**  
(mew)

**N**

**Nu**  
(new)

**Ξ**

**Xi**  
(zie)

**O**

**Omicron**  
(om-e-cron)

**Π**

**Pi**  
(pie)

**P**

**Rho**  
(roe)

**Σ**

**Sigma**  
(sig-mah)

**T**

**Tau**  
(taw)

**Υ**

**Upsilon**  
(up-si-lon)

**Φ**

**Phi**  
(fie)

**X**

**Chi**  
(kie)

**Ψ**

**Psi**  
(sigh)

**Ω**

**Omega**  
(oh-may-gah)

**ACTIVE:** An initiated member of a sorority who has completed her new member education.

**ALUMNA:** An initiated member who is no longer in college.

**BID:** A formal invitation to join a sorority.

**BID MATCHING:** A system of matching a potential member's preferences with sororities' preferences.

**CHAPTER:** A local group of a national sorority.

**FORMAL RECRUITMENT:** A series of parties hosted by each sorority during a specific period which are scheduled and governed by Panhellenic Council.

**INITIATION:** The formal ceremony during which a new member takes her formal vows for full membership into a sorority.

**INTENTIONAL SINGLE PREFERENCE:** This occurs when a PNM only lists 1 sorority on her preference card after attending multiple preference parties. This may lessen the PNMs chances of receiving a bid, and is strongly discouraged.

**LEGACY:** A prospective member whose sister, mother or grandmother is an alumna or active member of a particular sorority. A sorority is not obligated to give bids to its legacies.

**MIXER:** A social activity with multiple Greek organizations.

**NATIONALS:** The governing body of each sorority on a national level; the central headquarters of a Greek organization.

**NEW MEMBER:** A woman who has accepted a bid from a sorority but has not yet been initiated.

**PANHELLENIC COUNCIL:** A representative governing body of sororities affiliated with the National Panhellenic Conference.

**PHILANTHROPY:** A service project undertaken by Greek chapters on a campus, community or national level.

**POTENTIAL NEW MEMBER (PNM):** Any college woman interested in participating in formal or informal Recruitment.

**RECRUITMENT COUNSELOR:** Disaffiliated members of USC Upstate Panhellenic Sororities who serve as Recruitment Counselors during Formal Recruitment.

**QUOTA:** The maximum number of potential members to which a sorority can distribute bids.



# USC Upstate Hazing Policy

In addition to the legal and physical risks, hazing is harmful to the morale of members and creates additional problems within the organization. The very activities meant to “build pledge class/line unity” can be detrimental to the overall unity within the organization, creating issues with distrust and loyalty. It also hinders the ability of organizations to recruit and retain members and can create a vicious cycle that will ultimately destroy the organization.

The University defines hazing as any act that endangers the mental or physical health or safety of a student, faculty member or other University official. This includes the removal of public or private property for the purpose of initiation, admission into, affiliation with or as a continued membership in a group or organization (Code of Student Behavior). It is important to note that a student’s “willingness” to participate in the hazing activities is not a defense. Essentially, if someone gives an organization “permission” to haze them, it is still hazing and is still a violation of the Code of Student Behavior and South Carolina Law. Additionally, hazing is not an issue limited to fraternities and sororities, but can also occur in non-Greek organizations and athletic teams. If you feel that you have been hazed, please contact the Office of Student Life via email at [stulife@uscupstate.edu](mailto:stulife@uscupstate.edu) or phone 864-503-5387, or contact the Dean of Students at 864-503-5107 to submit a report. Such reports can be submitted anonymously. Additionally, any member of the University or surrounding community who has witnessed hazing activities can also submit reports for us to investigate.



**Fraternity and  
Sorority Life**

Office of Student Life  
Sansbury CLC Suite 210

864.503.5122 • [gogreek@uscupstate.edu](mailto:gogreek@uscupstate.edu)



[@USCUpstateFSL](https://twitter.com/USCUpstateFSL)



[USC Upstate Student Life](https://www.facebook.com/USCUpstateStudentLife)

UPSTATE

