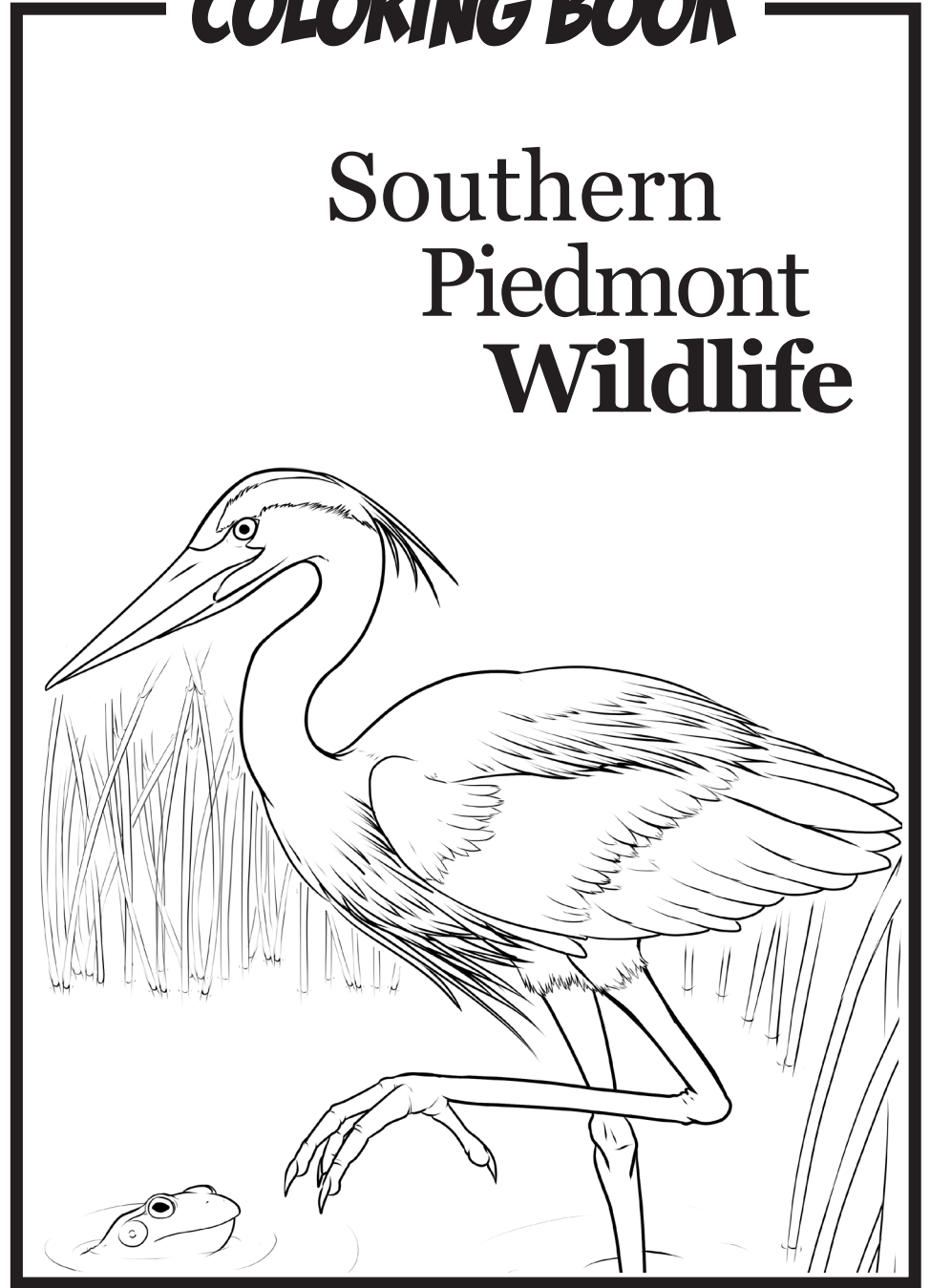
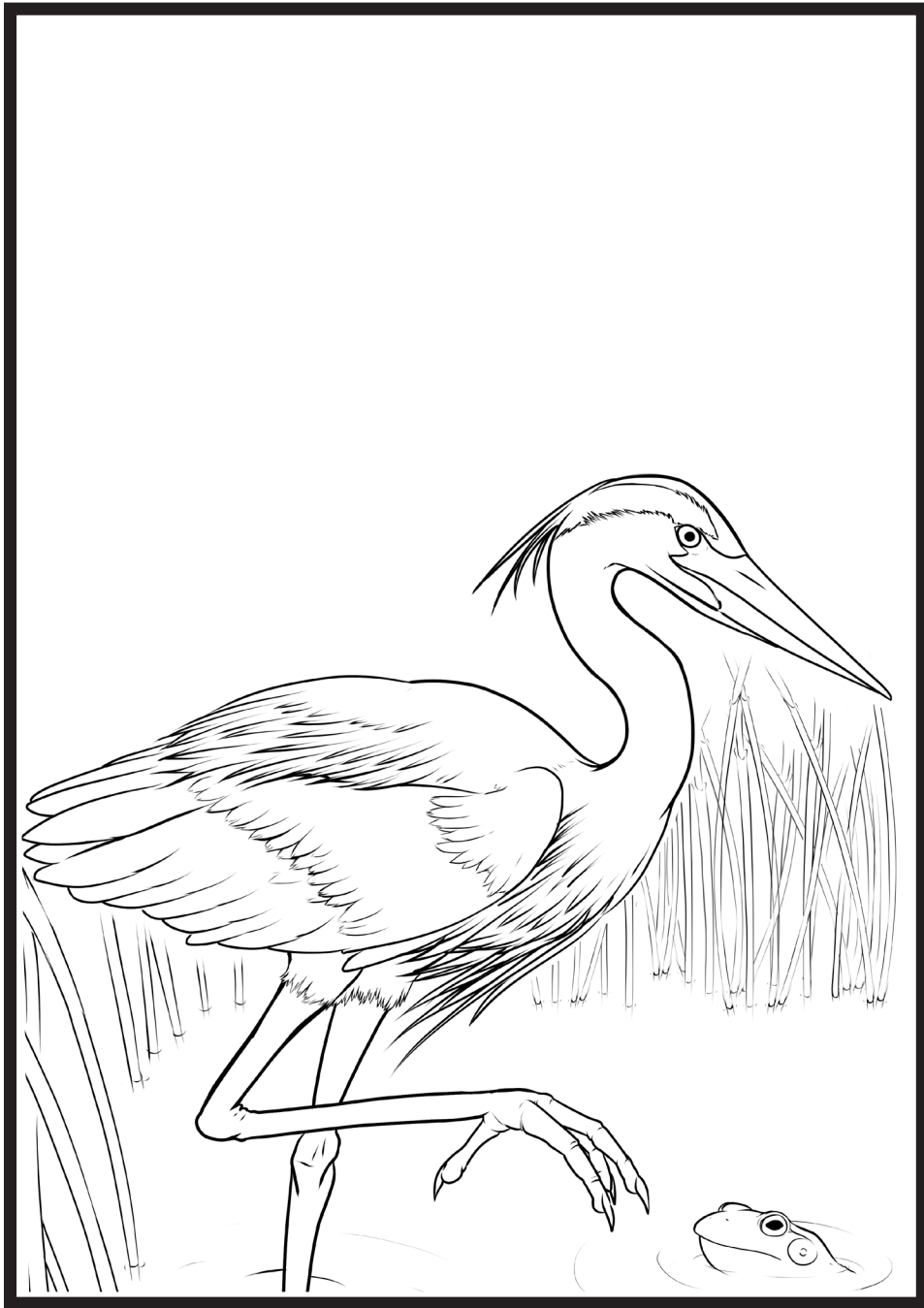


COLORING BOOK

Southern Piedmont Wildlife



COLORING BOOK

Southern Piedmont Wildlife



Coloring Book Wildlife:

Mock Strawberry
Striped Wintergreen
Carolina Mantis
Eastern Tiger Swallowtail
Yellow Garden Spider
Spotted Salamander
Eastern Painted Turtle
Eastern Box Turtle
Copperhead
Northern Watersnake
Great Blue Heron
White-tailed Deer
Draw Your Own Organism

Authors:

Ashlyn Westmoreland
Alexis McAllister
Mariya Dmitrienko

Editor: Jonathan Storm

Illustrator: Michael Weeks

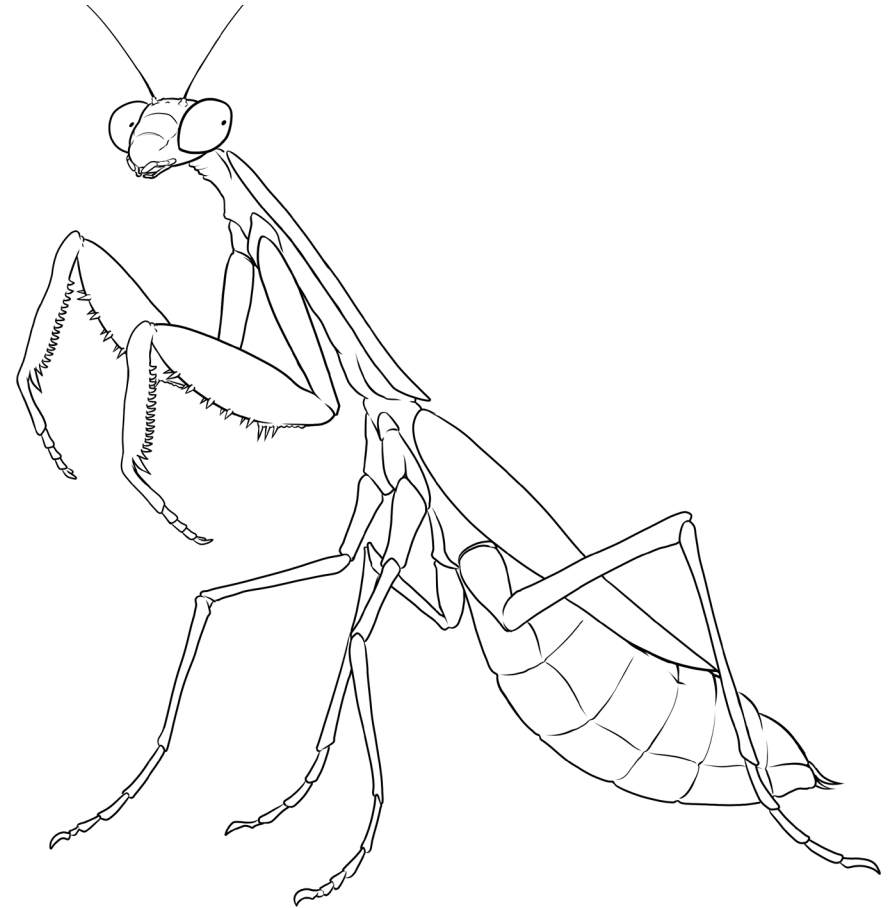
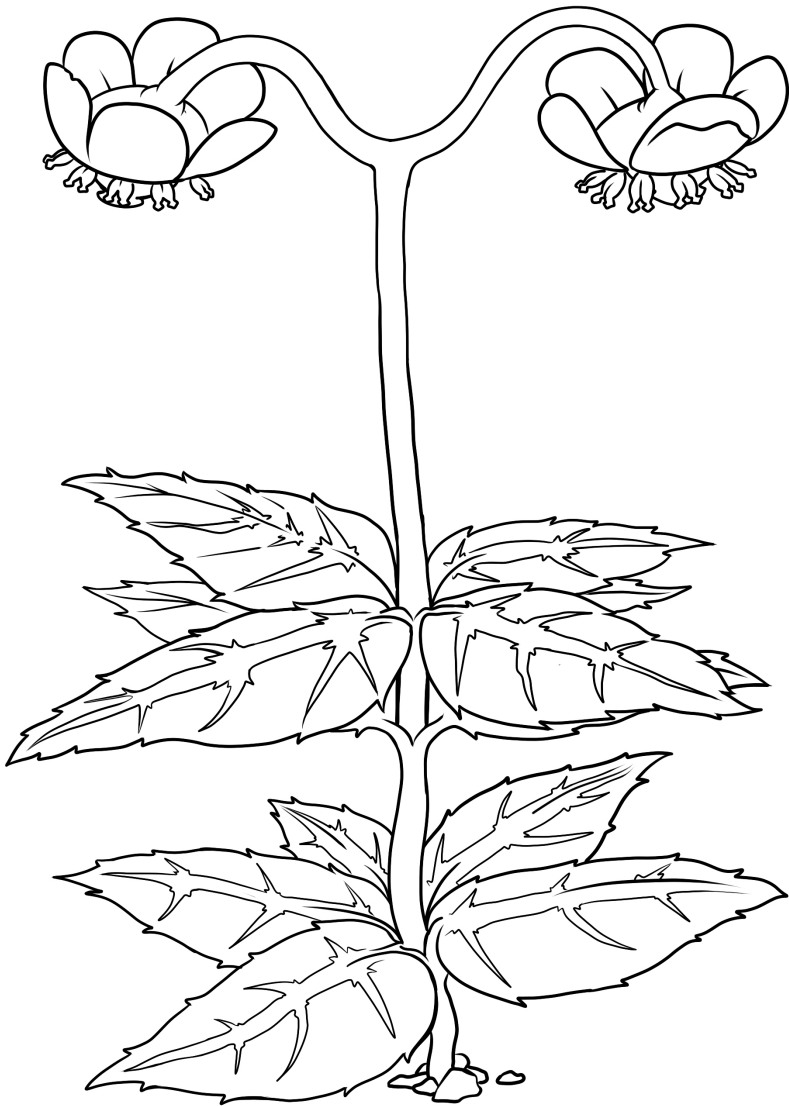
Layout: Bridget Kirkland



Mock Strawberry (*Duchesnea indica*)

This perennial is common along roadsides and in yards. It produces yellow flowers from spring until fall. It is an introduced species native to Asia. Despite its name, the small red fruit is not a true strawberry.

Striped Wintergreen (*Chimaphila maculata*) This plant has dark, evergreen leaves with white vein markings. It grows in shady areas in upland pine and hardwood forests. During May and June, striped wintergreen produces one to five white or pink flowers that nod downward from the top of the plant. Nectar secreted within the flower attracts pollinators such as bumblebees.

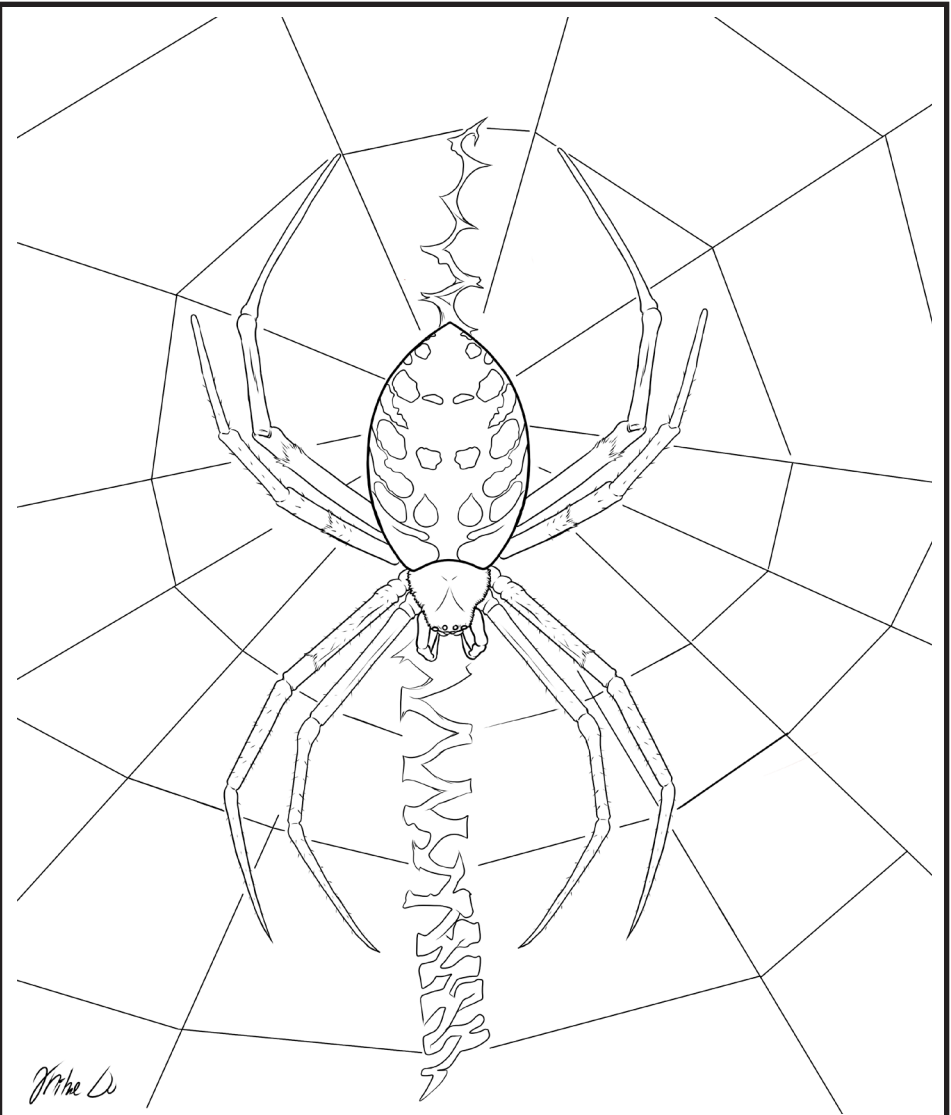
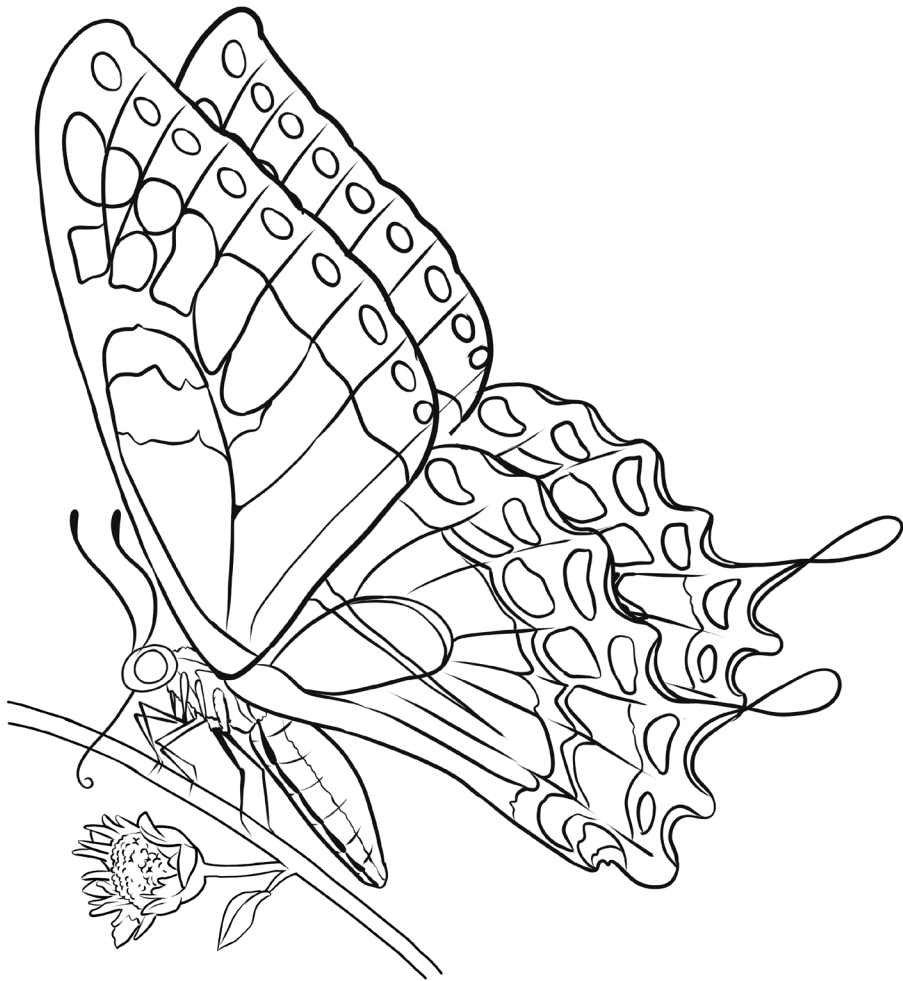


Carolina Mantis (*Stagmomantis carolina*)

This large, green insect is common in grassy fields and gardens. It is a sit-and-wait predator whose color blends into vegetation. When a bee or grasshopper gets close, the mantis quickly grabs the prey with its spiny front legs. The spines help keep the prey from escaping their grasp. Carolina mantids have mobile heads and large eyes that help them spot both prey and predators.

Eastern Tiger Swallowtail (*Papilio glaucus*)

This butterfly is common in woodlands and gardens. Female butterflies come in two forms. The yellow morph, drawn here, is yellow with black tiger stripes on the front wings. Dark morph females are black, except for a blue patch on the hindwing margin. Young caterpillars avoid predators by resembling bird droppings. As they mature, caterpillars turn green and grow a humped front end with large eyespots. These features may help the caterpillar resemble a snake and reduce predation by birds.

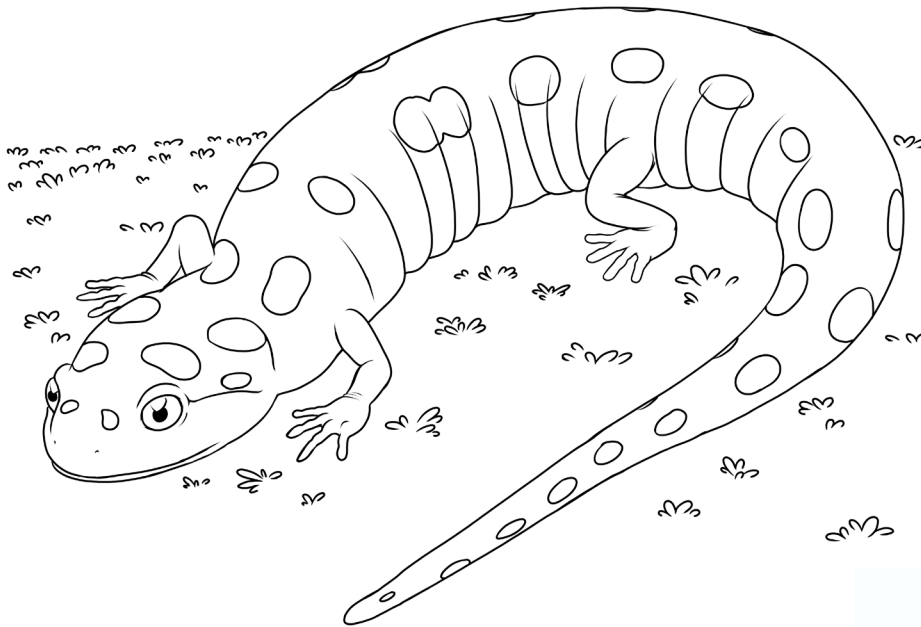


Yellow Garden Spider (*Argiope aurantia*)

Females, such as the one here, have a yellow and black abdomen. This spider is common in fields and gardens where they eat invertebrates captured on their web. They paralyze prey with a bite to the back of the head and then wrap them in silk. Often called a “writing spider” due to the vertical, white zig-zag (stabilimentum) across the web. These zig-zags stabilize the web and may also attract prey.

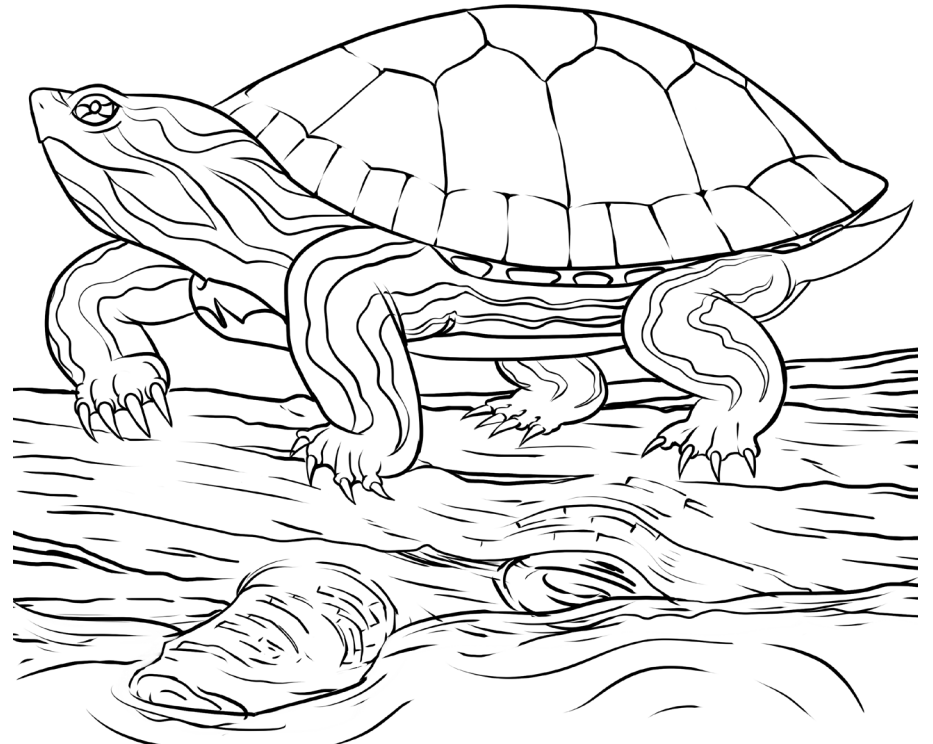
Spotted Salamander (*Ambystoma maculatum*)

This amphibian is black with two rows of yellow or orange spots on their back. They live in forests next to wetlands. In late winter, females lay eggs on sticks in the wetland. Females cover the eggs in a jelly that protects them from predators such as fish and frogs. Like many salamanders, the adults have skin secretions that taste bad to predators.



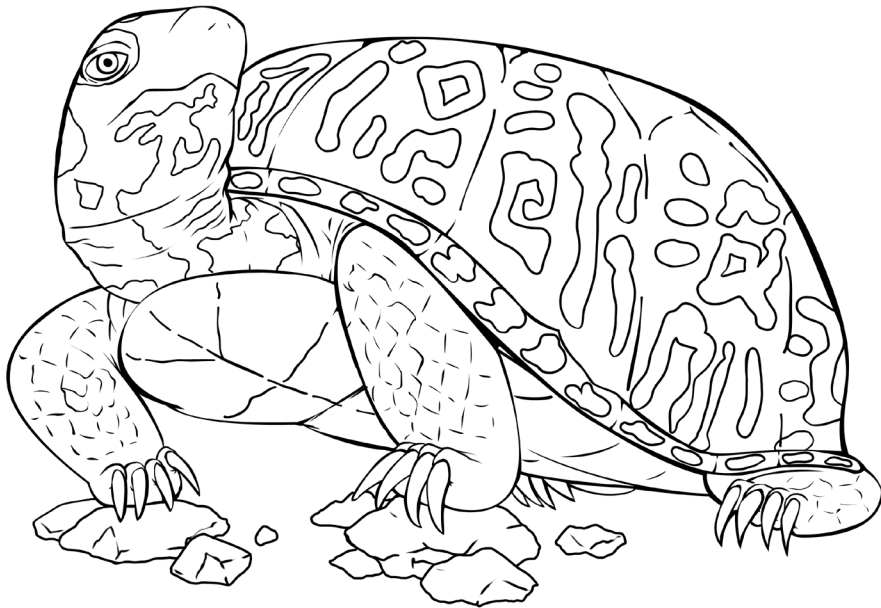
Eastern Painted Turtle (*Chrysemys picta*)

This reptile is often seen basking on logs and rocks in marshes and ponds. As ectotherms, their body temperature varies with the environment. Painted turtles have two large, yellow spots behind each eye and yellow lines running down the neck. They eat earthworms, insects, and crayfish. Females dig shallow nests and lay 2 to 8 eggs from which young hatch in early fall.



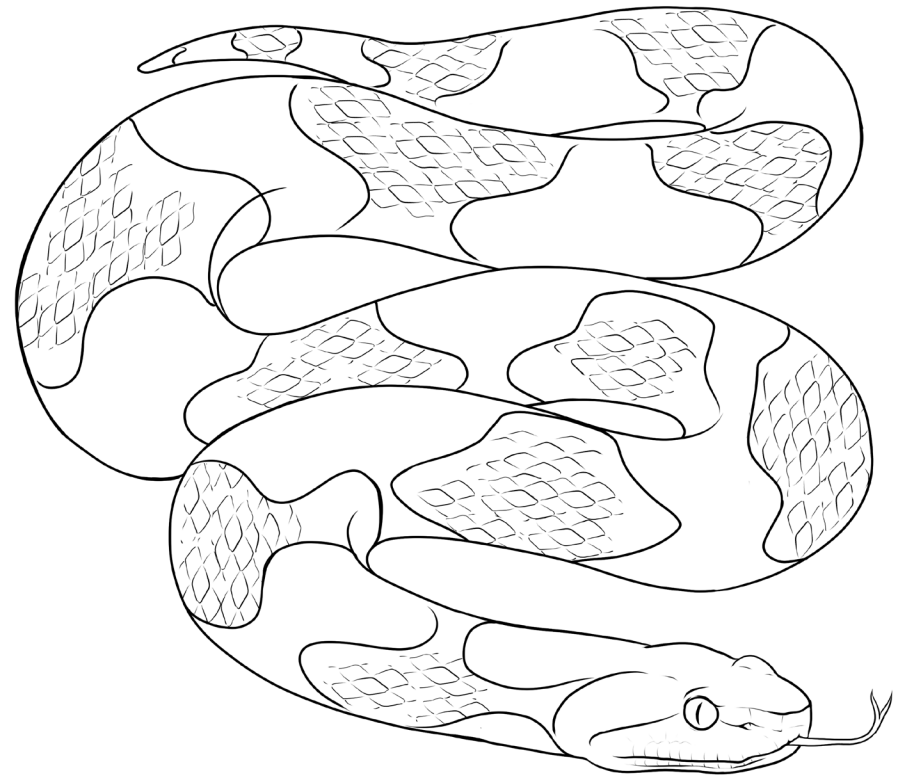
Eastern Box Turtle (*Terrapene carolina*)

This terrestrial reptile is common in woodlands and grassy fields, and can often be seen crossing roads. The shell is black with yellow or orange spots and finger-like markings. Like other reptiles, they are ectotherms, and must use sunlight and warm surfaces to regulate their body temperature. As omnivores, they eat plants, animals, and fungi. Box turtles are different from other turtles because their belly plate (plastron) has a hinge that allows them to completely seal their head, limbs, and tail within the shell to escape predators. Females use their claws to dig a nest in the soil and then lay their eggs. They then use their legs and claws to cover the eggs with a shallow layer of dirt.



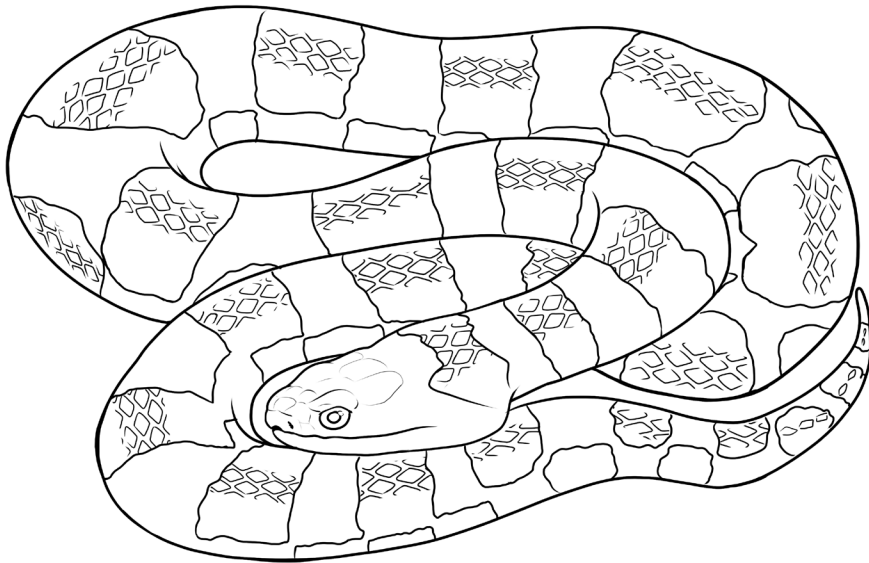
Copperhead (*Agkistrodon contortrix*)

This snake has a light brown body with dark brown, hourglass-shaped cross-bands. Copperheads live in forested habitat along streams, but can also be found in suburban yards. They are well camouflaged on the leaf litter of the forest floor. As a sit-and-wait predator, they use this camouflage to ambush prey. Common food items are rodents, frogs, and lizards. Copperheads strike prey and inject venom with their fangs. They are not aggressive snakes and should be left alone when encountered.



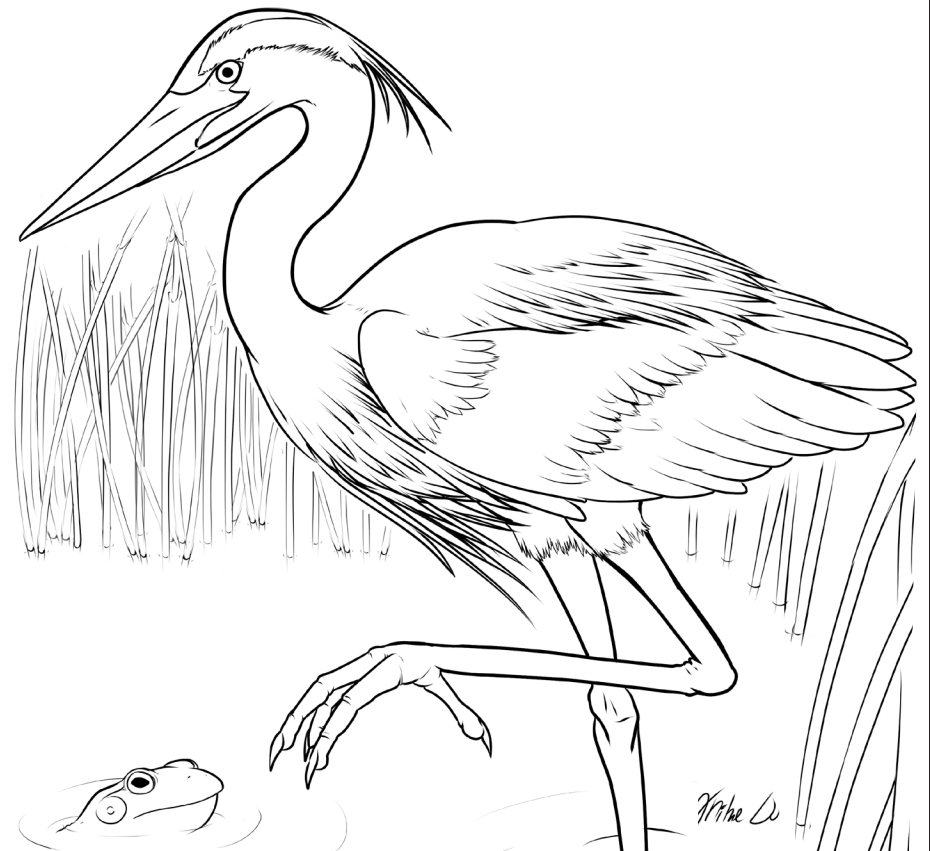
Northern Watersnake (*Nerodia sipedon*)

This snake is brown, red, tan, or gray. They have dark splotches on their back and lateral bands on the back half of the body. They live along lakes and rivers where they eat fish, frogs, and toads. As reptiles, they are ectothermic. They often bask on sunny logs and rocks to raise their body temperature. Northern watersnakes are not venomous and will often retreat into the water when approached. When grabbed by a predator, they release a foul-smelling musk.



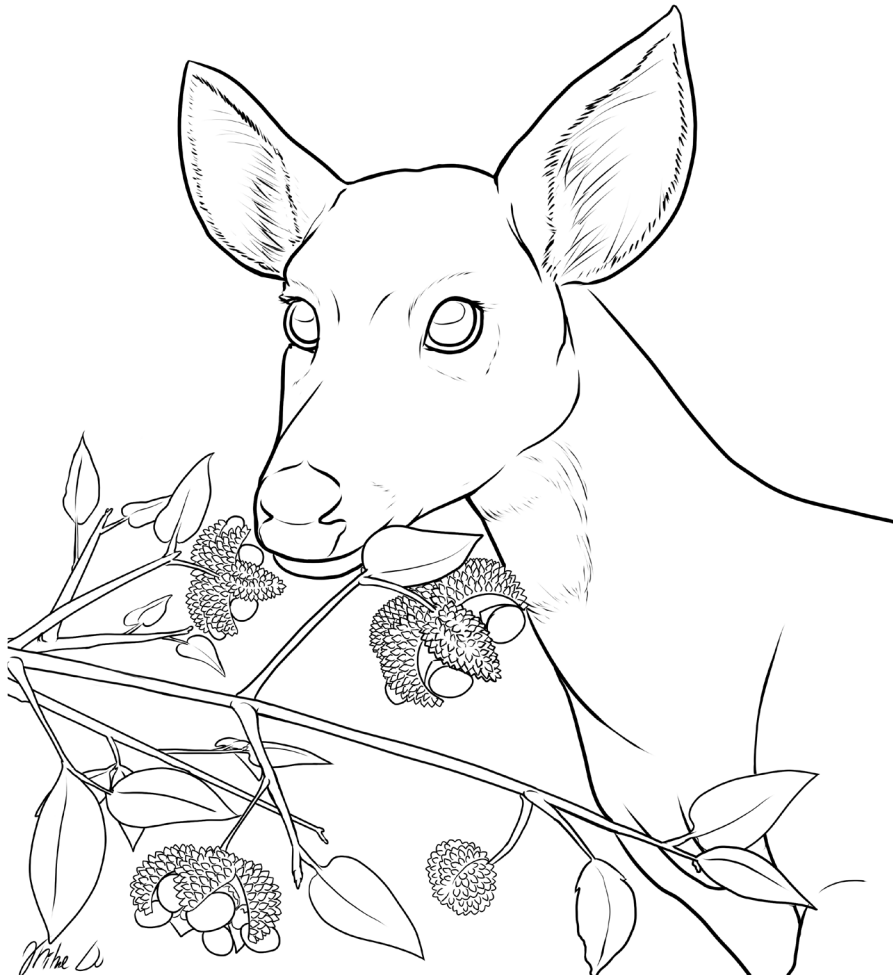
Great Blue Heron (*Ardea herodias*)

This is one of the largest birds in North America. It stands 4 feet tall and has a 6 foot wingspan. Their feathers are blue-gray, with rusty patches at the front of the wings and tops of the legs. There is also a bold black stripe above the eyes. Herons are common around rivers, lakes, and marshes. They are carnivores, feeding mostly on fish and aquatic invertebrates, but also frogs, snakes, and mice. They hunt by standing still in shallow water and then quickly grabbing prey with their beak. The inside edge of their bill has ridges that help them hold onto slippery fish. Mated pairs form a large stick nest and raise their young in large colonies.



White-tailed Deer (*Odocoileus virginianus*) eating
Strawberry Bush (*Euonymus americanus*)

This mammal is common in forests with shrubs and nearby farmland. They eat leaves, twigs, acorns, berries, and mushrooms. Deer have a stomach with four chambers. Bacteria in the stomach digest plant material eaten by the deer. Soft skin called velvet covers the growing antlers on bucks during the spring and summer. The velvet is scraped off in autumn.



Draw Your Own Organism.